

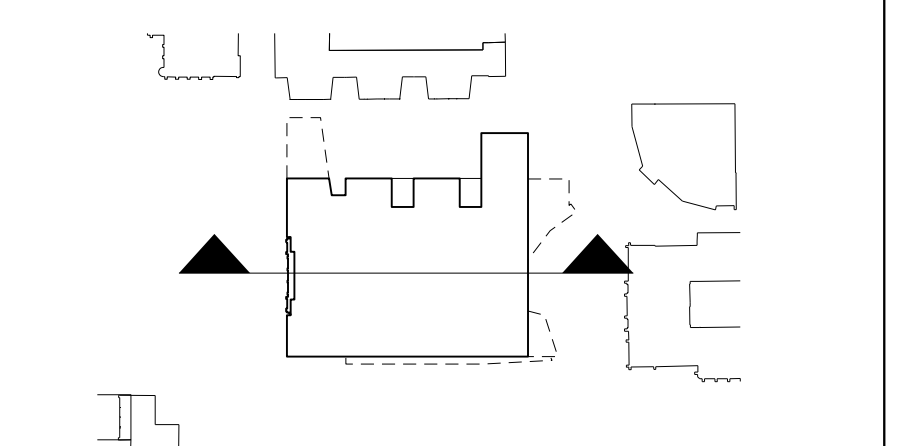
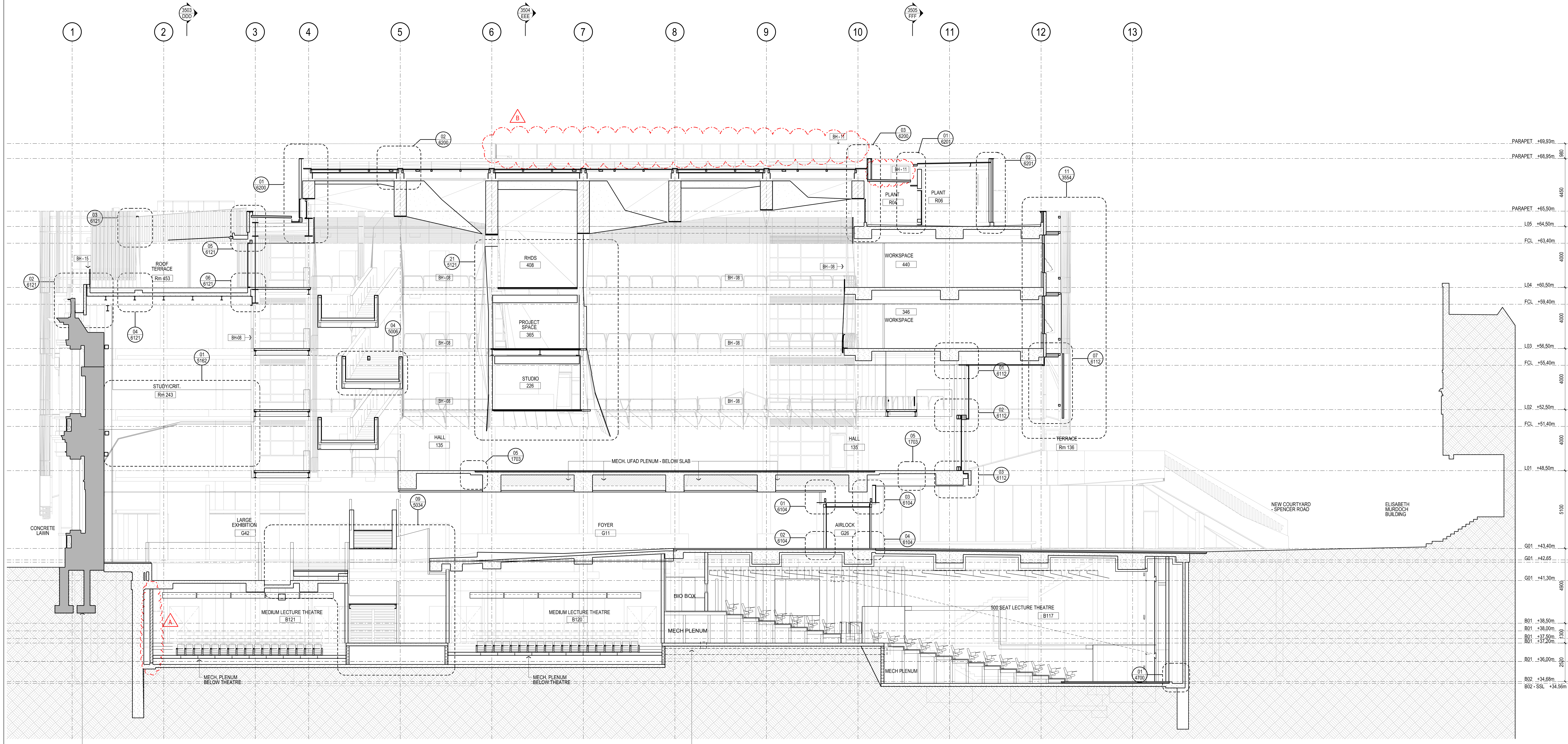
THIS DRAWING IS AN UNCONTROLLED COPY UNLESS STAMPED OTHERWISE

CONTRACTORS SHALL VERIFY JOB DIMENSIONS BEFORE ANY JOB COMMENCES. ALL SHOP DRAWINGS SHALL BE SUBMITTED TO THE SUPERINTENDENT AND MANUFACTURER SHALL NOT COMMENCE FROM THE RETURN OF DIMENSIONS SHOP DRAWINGS ISSUED BY THE CONSULTANT. FIGURED DIMENSIONS SHALL TAKE PRECEDENCE OVER SCALED. THIS DRAWING SHOULD BE READ IN CONJUNCTION WITH ALL RELEVANT CONTRACT SPECIFICATIONS AND DRAWINGS COPYRIGHT OF THIS DRAWING IS VESTED IN WARDLE

General Notes

REFER ARCHITECTURAL DRAWINGS:

- FACADE SETOUT AR1502-AR1507
- PRECAST SETOUT AR1512-AR1517
- SCREEN SETOUT AR1552-AR1557
- SCREEN DETAILS AR8550-AR8554



Rev	Issue	Revision Description	And	Date
B	SG	BALUSTRADE ADDED ON ROOF		24.01.14
A	SG	BLOCKWORK WALL MOVED		17.10.13
14	SG	VALUE MANAGEMENT ISSUE		28.03.13
13	SG	PRECAST REVIEW		21.03.13
		BALUSTRADE DETAIL UPDATED		
12	SG	100% CD - TENDER UPDATE		28.08.12
11	SG	100% CD - TENDER ISSUE		07.09.12
10	SG	80% CD ISSUE		10.08.12
09	SG	75% CD ISSUE		13.07.12
08	SG	50% CD ISSUE - UPDATE		08.06.12
07	SG	50% CD ISSUE		01.06.12
06	SG	25% CD ISSUE		20.04.12
05	SG	FINAL CD ISSUE		24.02.12
		BASEMENT SLAB PROFILE REVISED		
04	SG	DD UPDATE		20.01.12
03	SG	DESIGN DEVELOPMENT ISSUE		22.12.11
02	SG	PRELIMINARY DD		07.11.11
01	SG	PRELIMINARY DD		07.10.11



NADAAA
 NADAAA
 1520 Washington Street No.2 Boston Massachusetts 02118 USA
 Telephone +1 617 442 8232 Facsimile +1 688 442 1417 Email nadaaa@nadaaa.com

John Wardle Architects
 25 Rokeby Street, Collingwood, Victoria 3066 Australia
 Tel: +61 3 8662 0400 www.johnwardlearchitects.com
 © 2014 John Wardle Architects ABN 83 006 814 268

Client **University of Melbourne Parkville Campus**
 Project **Faculty of Architecture Building and Planning**

Title **GENERAL ARRANGEMENT SECTION B**

Project No.	0913	Scale	1:100 @ A0 1:200 @ A2
Drawing No.	AR3501	Revision	B

Date: Sept 2011 Drawn: - Co-Ord: - Check: -

FILENAME: SFILES

FOR CONSTRUCTION

EXISTING JOSEPH REED / OLD COMMERCE FACADE TO BE RETAINED

MECH DUCT IN SUB FLOOR TRENCH